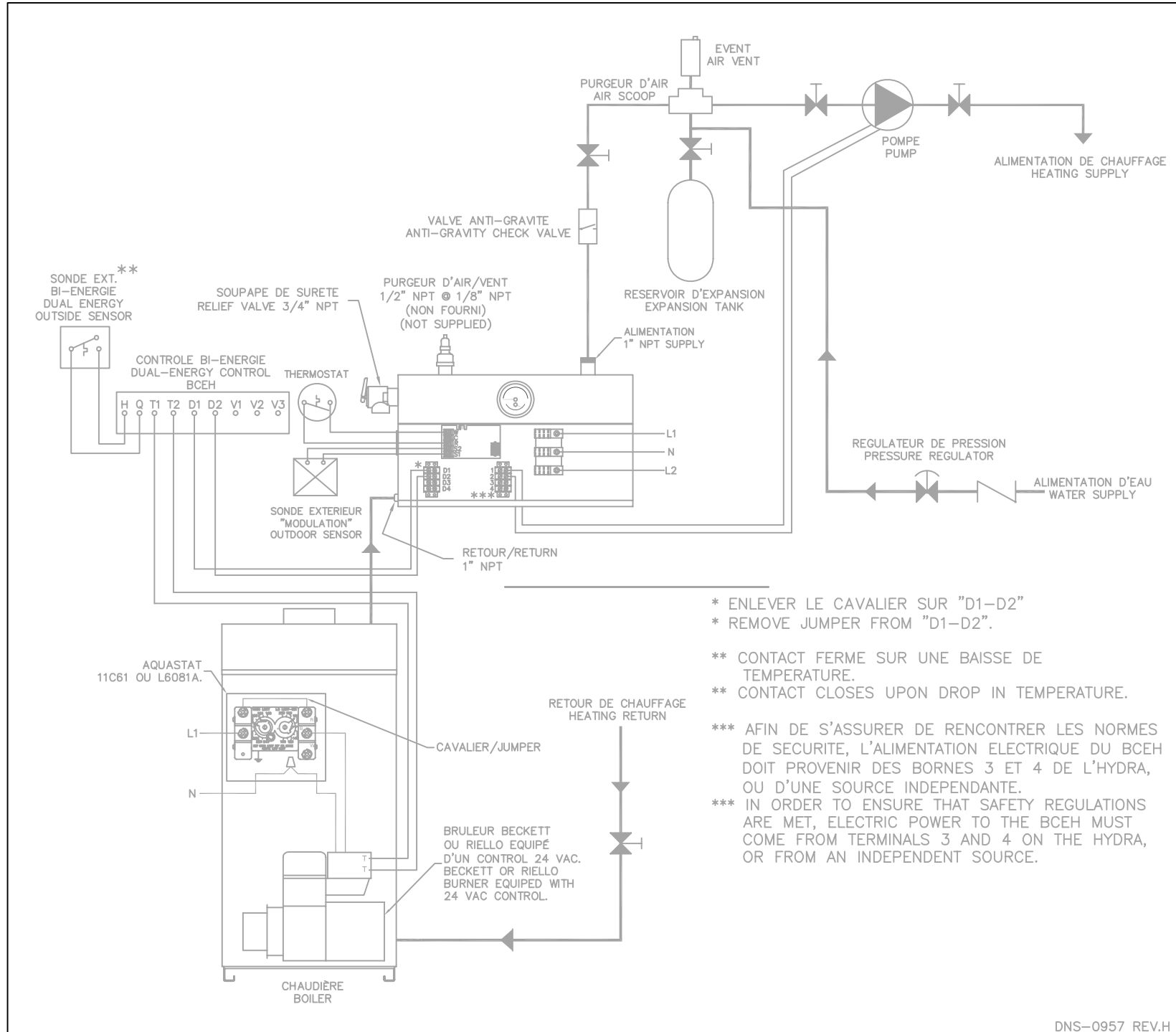


INSTALLATION BI-ÉNERGIE SANS VALVE 3 VOIES

DUAL ENERGY INSTALLATION WITHOUT 3 WAY VALVE



* ENLEVER LE CAVALIER SUR "D1-D2"
 * REMOVE JUMPER FROM "D1-D2".

** CONTACT FERME SUR UNE BAISSÉ DE TEMPERATURE.
 ** CONTACT CLOSES UPON DROP IN TEMPERATURE.

*** AFIN DE S'ASSURER DE RENCONTRER LES NORMES DE SECURITE, L'ALIMENTATION ELECTRIQUE DU BCEH DOIT PROVENIR DES BORNES 3 ET 4 DE L'HYDRA, OU D'UNE SOURCE INDEPENDANTE.
 *** IN ORDER TO ENSURE THAT SAFETY REGULATIONS ARE MET, ELECTRIC POWER TO THE BCEH MUST COME FROM TERMINALS 3 AND 4 ON THE HYDRA, OR FROM AN INDEPENDENT SOURCE.